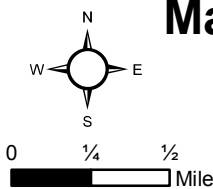


These maps are a representation of Ordinance 01-2018 for medical marihuana. There may be errors which inadvertently display a parcel in an allowed zone for permitting medical marihuana. Please consult the Planning Dept. of the City of Battle Creek for most accurate data.

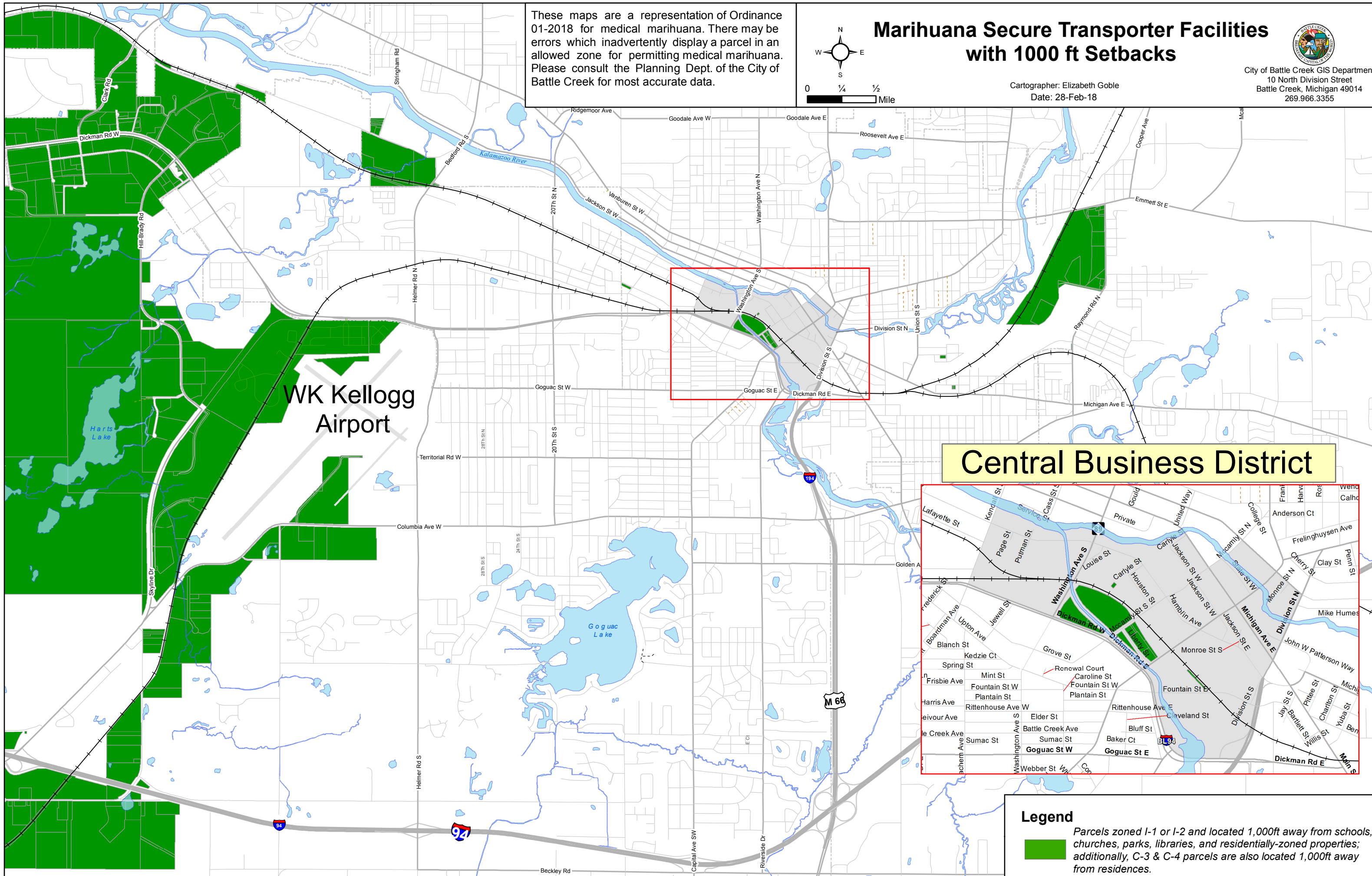


Marihuana Secure Transporter Facilities with 1000 ft Setbacks

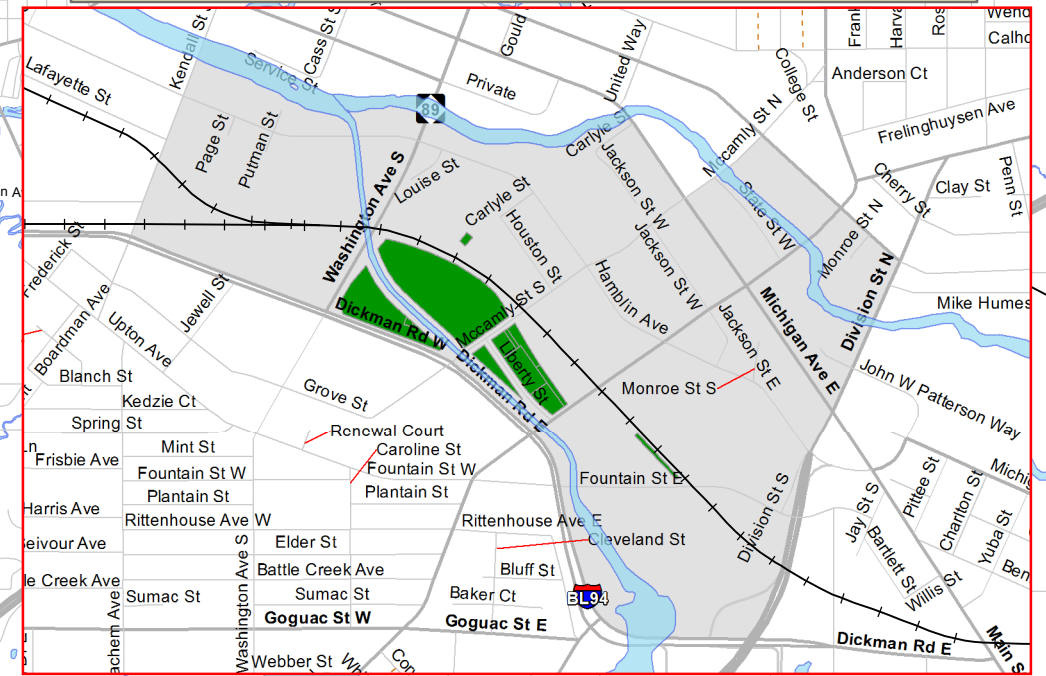


City of Battle Creek GIS Department
10 North Division Street
Battle Creek, Michigan 49014
269.966.3355

Cartographer: Elizabeth Goble
Date: 28-Feb-18



Central Business District



Legend
 Parcels zoned I-1 or I-2 and located 1,000ft away from schools, churches, parks, libraries, and residentially-zoned properties; additionally, C-3 & C-4 parcels are also located 1,000ft away from residences.